

The Pensteel Range of Rental Heavy Duty Steel IBCs

The RentaCube 800 Litre PressureCube Mini Tank



- Design Code PD5500 :2000 Cat 3, ADR, IMO & IM101
- Design pressure 4.0 bar , (test pressure 6.0 bar) @ 130° C
- Packaging Group 1, class 3, 5.1 & 5.2, 6.1, 8, 9 products
- Stainless Steel AISI 316 construction
- Four way entry for forklift and pallet truck handling.
- Top lift facility.
- Stack 4 high when full.
- Top discharge via dip pipe and ball valve (no bottom outlet – no closures beneath the liquid level).
- Pressure relief valve set at 4.4 bar, bursting disc and pressure gauge.
- Flanged filling point with DN 40 Ball Valve.

Top fill and Empty only

- 20 units fit into a 20' ISO container (16000 Ltrs)
- 6 point bolted 500mm manlid fitted with PTFE encapsulated seal.



RentaCube Rentals – a Division of :- Pensteel Limited

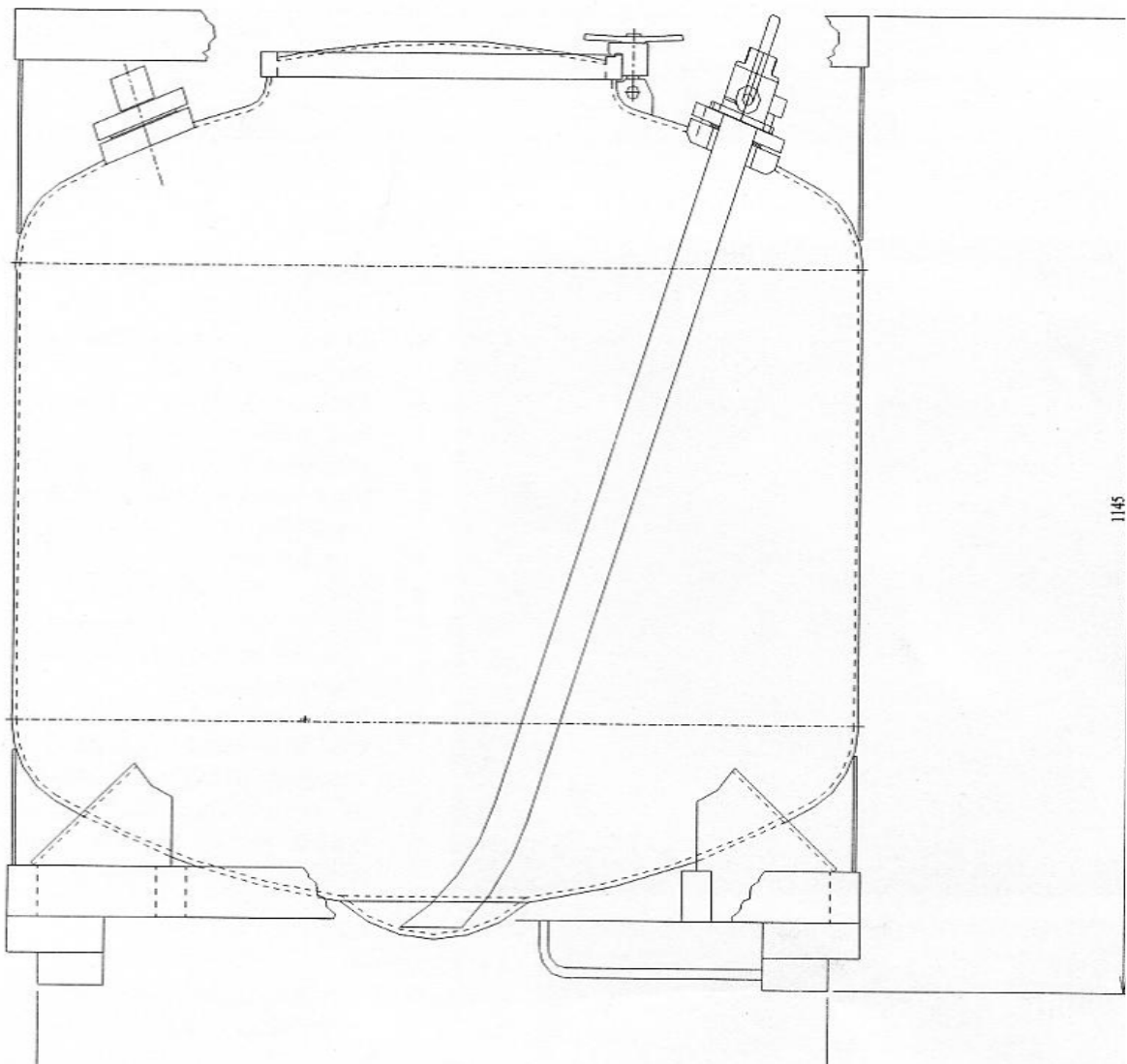
Unit 21 Seax Court, Southfields Business Park, Basildon, Essex. SS15 6SL.
Tel: 01268 545127 Fax: 01268 545188 Email: sales@pensteel.co.uk



The Pensteel Range of Rental Heavy Duty Steel IBCs

The RentaCube 800 Litre PressureCube Mini Tank

Capacity:	800 Litres
Dimensions: mm	1150 X 1150 X 1145 Ht
Tare weight: kgs	430
Gross weight: kgs	2580



OPTIONS: Various linings are available such as PTFE and a US DOT 51 version is also available

RentaCube Rentals – a Division of :- Pensteel Limited

Unit 21 Seax Court, Southfields Business Park, Basildon, Essex. SS15 6SL.
Tel: 01268 545127 Fax: 01268 545188 Email: sales@pensteel.co.uk