

Pensteel Range of Heavy Duty Stainless steel IBCs

Mamec Contmixer

- * Simple installation in IBC's and small tanks.
- * A modular design that allows optimum mixer configuration for any application.
- * Standard models that offer low-cost solutions while quick-connect models add flexibility and adaptability.
- * Lower capital investment by minimising the quantity of drive motors required. Each IBC can have its own shaft and paddles fitted whilst the drive mechanism is easily transferred between the IBC's.
- * Lower transport costs as IBC's without motors can be transported stacked if weight considerations allow.
- * Transport of hazardous products in IBC's with shaft and paddles fitted now becomes possible - ready for immediate agitation and use on arrival.
- * Costly VOC emission - protection costs could be avoided as equipment is pressure and gas tight.
- * Faster and simpler operation as connection between motor and shaft is effected by quick release coupling.



Shaft and ring propeller assembly fixed to a manhole cover



Demountable mixer from shaft and paddle assembly

Pensteel Limited

Unit 21 Seax Court, Southfields Business Park, Basildon, Essex. SS15 6SL.
Tel: 01268 545127 Fax: 01268 545188 Email: sales@pensteel.co.uk

Pensteel Range of Heavy Duty Stainless steel IBCs

Mamec Contmixer

MIXING GUARANTEE

We'll give you a mixing guarantee providing that we have all the following information on your application:

- Purpose of mixing
- The tank: - the size and dimensions
- The liquid: - temperature, viscosity, density, quantity and other essential information.

INSTALLATION

The motor stand / bearing housing on the mixer is designed with external BSP threads allowing the unit to be mounted directly on the container onto a 2" diameter connection outlet with internal pipe threads.

The CONTMIXER may also be installed on fixed tanks with lids using the mounting hardware or open tanks using rim clamps designed by MAMEC

CONSTRUCTION

- Bearings- The bearing housing features two ball bearings with a separate inner shaft and flexible coupling.

Motor Stand / Bearing housing- On the standard model, the MS/BH is AISI 316StSt. On the quick connect model, the MS/BH is AISI 316StSt below the quick-connector and aluminium above the quick-connector.

Wetted parts- All wetted parts are AISI 316StSt. Other construction materials may be used at the request of the customer.

- Compression mounting nuts allow multiple blades and propellers to be attached at freely selectable heights to the mixing shaft simultaneously.

- Motors- Standard motors, gear motors, air-driven motors and hydraulic motors are available. Special motor voltages or housings are available at the request of the customer.

QUICK-CONNECT MODELS

- The quick-connect model features a driving unit and a mixing unit. With this model, mixing units may be installed in a number of containers while the driving unit may be changed from container to container as mixing is needed.



TESTING, QUALITY AND DOCUMENTATION

- Each mixer is tested thoroughly, including vibration and balancing, before shipment.

-The MAMEC mixer manufacturing process includes a documented quality control programme.



Pensteel Limited

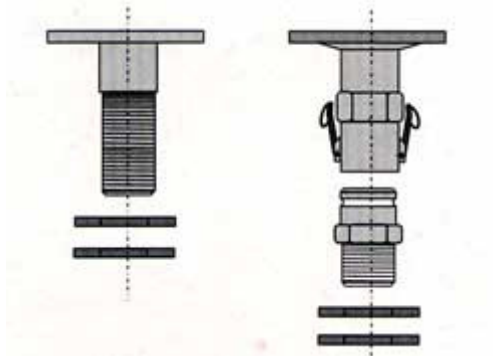
Unit 21 Seax Court, Southfields Business Park, Basildon, Essex. SS15 6SL.
Tel: 01268 545127 Fax: 01268 545188 Email: sales@pensteel.co.uk

CONTMIX - MODULE COMPONENTS



MOTOR:

- * ELECTRICAL MOTOR
- * GEAR MOTOR
- * AIR MOTOR
- * HYDRAULIC MOTOR



MOTOR STAND/BEARING HOUSING:

1. STANDARD MODEL WITH A FLEXIBLE COUPLING, 2 BALL BEARINGS, INNER SHAFT AND 2" THREADED MOTOR STAND/BEARING HOUSING
2. QUICK-CONNECT MODEL WITH SAME FEATURES



INSTALLATION: .

1. MOUNT DIRECTLY TO A 2" THREADED CONNECTION OUTLET.
2. 300 mm x 300 mm INSTALLATION PLATE.
3. DN 150 FLANGE.
4. MAMEC RIM CLAMPS.

SHAFT:



- * STANDARD SHAFT LENGTHS 600, 700, 800, 900, 1000, 1100 AND 1200 mm (23.62", 27.56", 31.50", 35.43", 39.37", 43.31" AND 47.24").
- * SPECIAL LENGTHS AVAILABLE

MIXING ELEMENT:

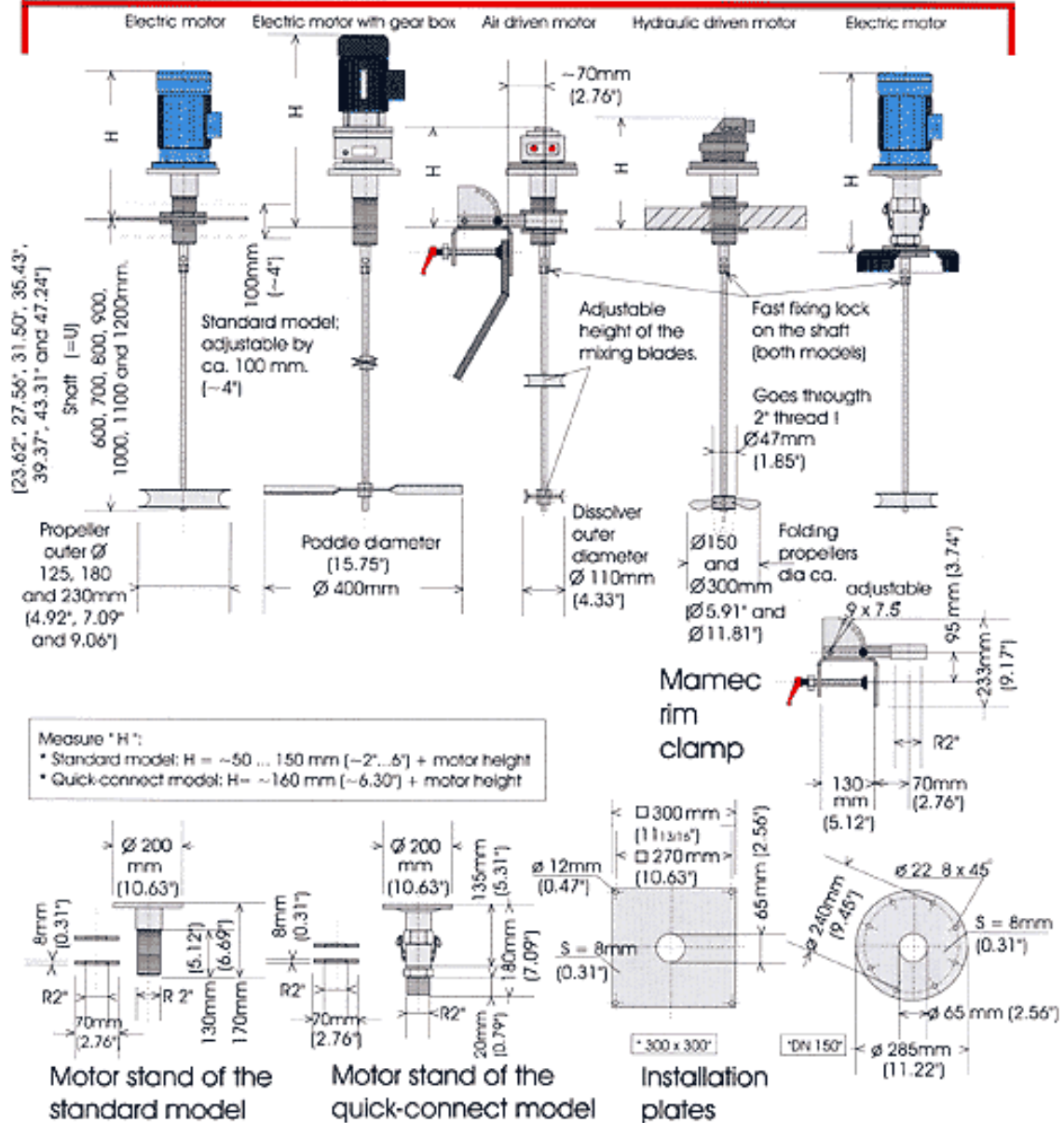


1. PROPELLER WITH OUTER BALANCING 125, 180 AND 230 mm (4.92", 7.09" AND 9.06")
2. PADDLE 400 mm (15.75")
3. DISSOLVER 110 mm (4.33") OUTER DIAMETER
4. FOLDING PROPELLER (FOR 2" HOLE): 150 AND 300 (FOR 2" HOLE): 150 AND 300 mm (5.91" AND 11.81")

Pensteel Range of Heavy Duty Stainless steel IBCs

Mamec Contmixer

MEASURE DRAWINGS : MODULAR CONSTRUCTION WITH STANDARD PARTS I



Pensteel Limited

Unit 21 Seax Court, Southfields Business Park, Basildon, Essex. SS15 6SL.
Tel: 01268 545127 Fax: 01268 545188 Email: sales@pensteel.co.uk